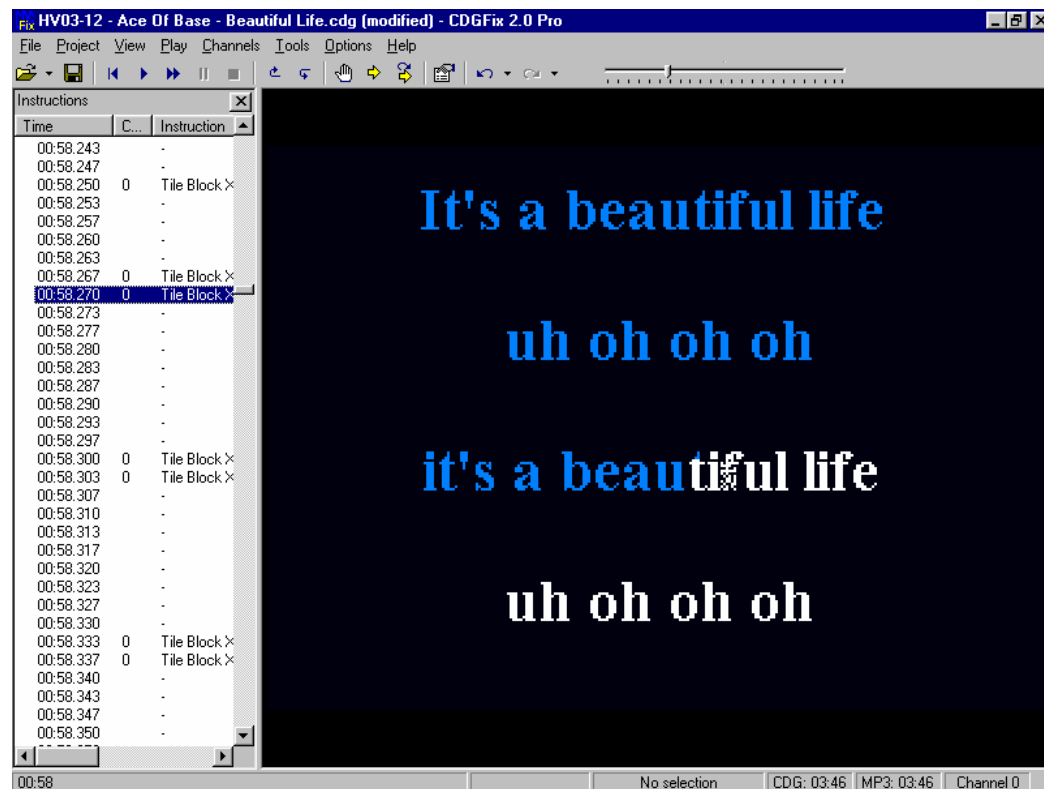


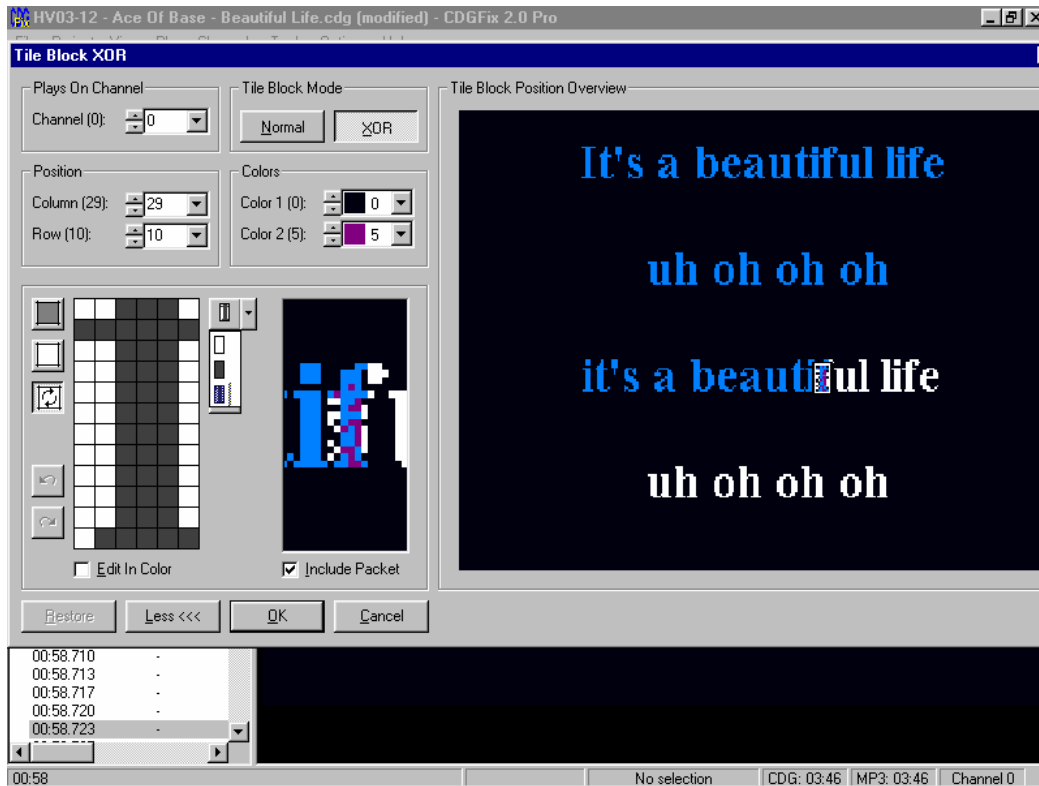
Repairing A Faulty Block By Copying A Good One

Sometimes a block is so badly errored then it will take ages to repair.
So what we are able to do now is to copy the sweep as it should be the same as the main text and copy it to the correct part of the word.

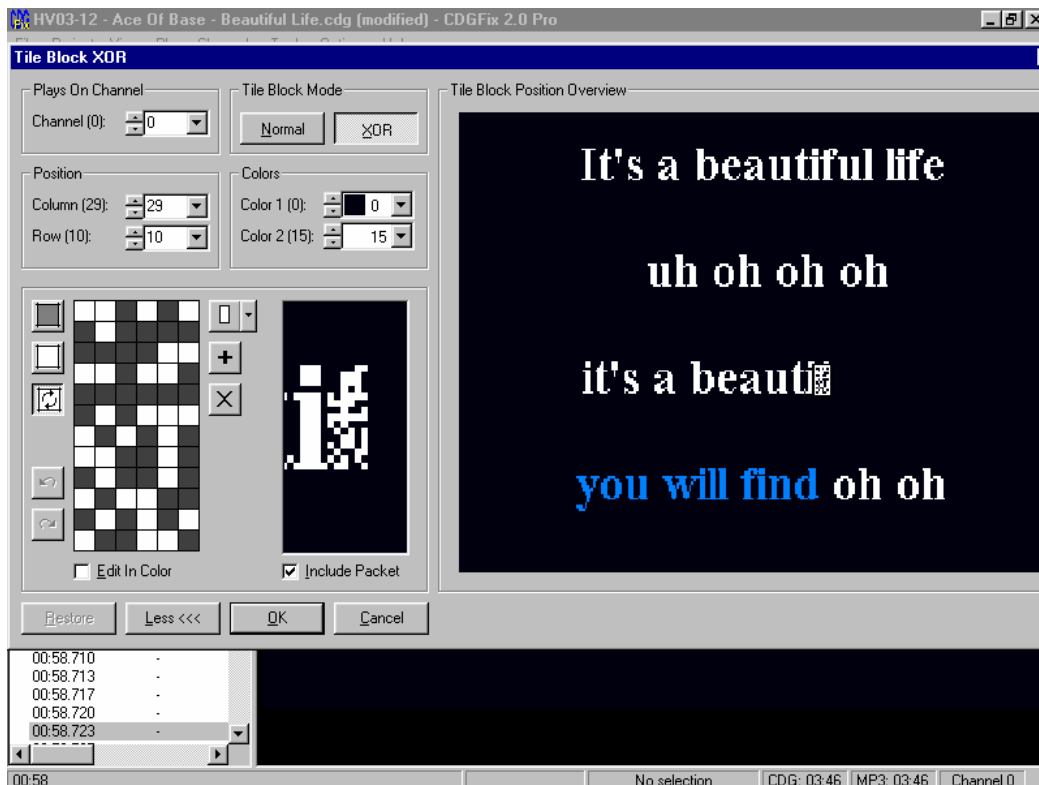


As you can see the F is a bit of a mess, so what we do is play the file untill the sweep runs over it then pause.

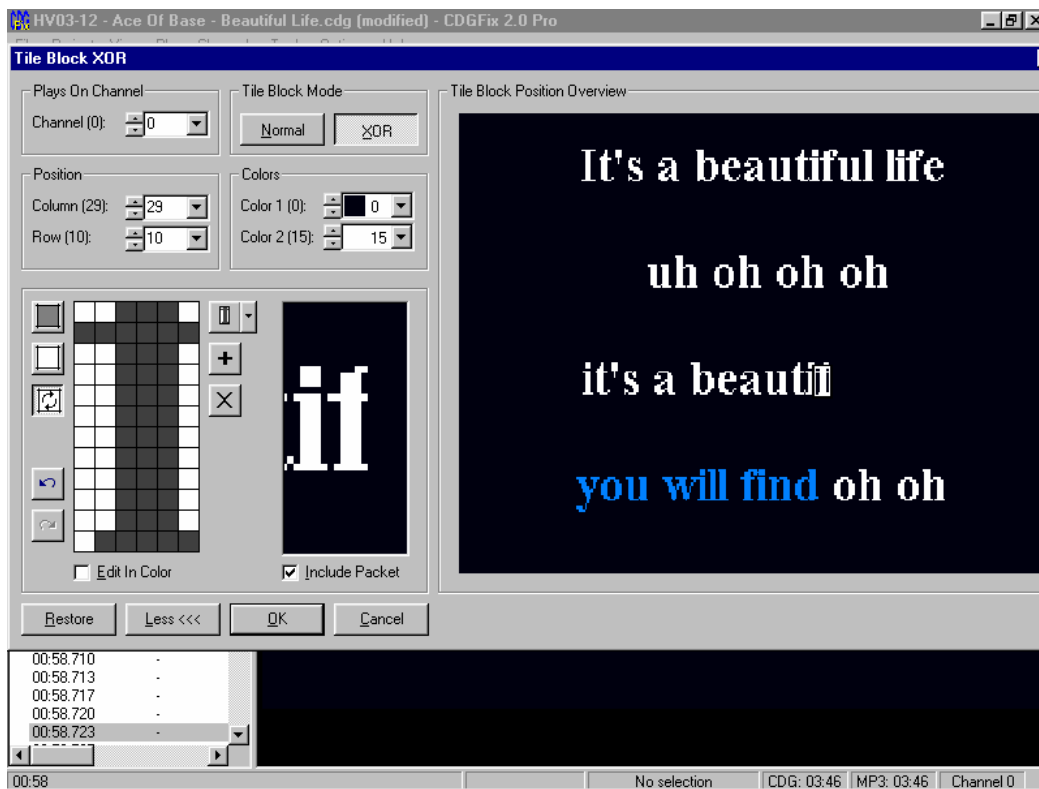
Now the last command at the bottom should be the sweep that is ok. (00:58:337) and the one before will be the text which is badly errored (00:52:690). So what we are gonna do is copy the good one to where the bad one is. Edit the sweep block which is ok. But instead of repairing this, just press the + button. This adds the current block information to the software , to use again.



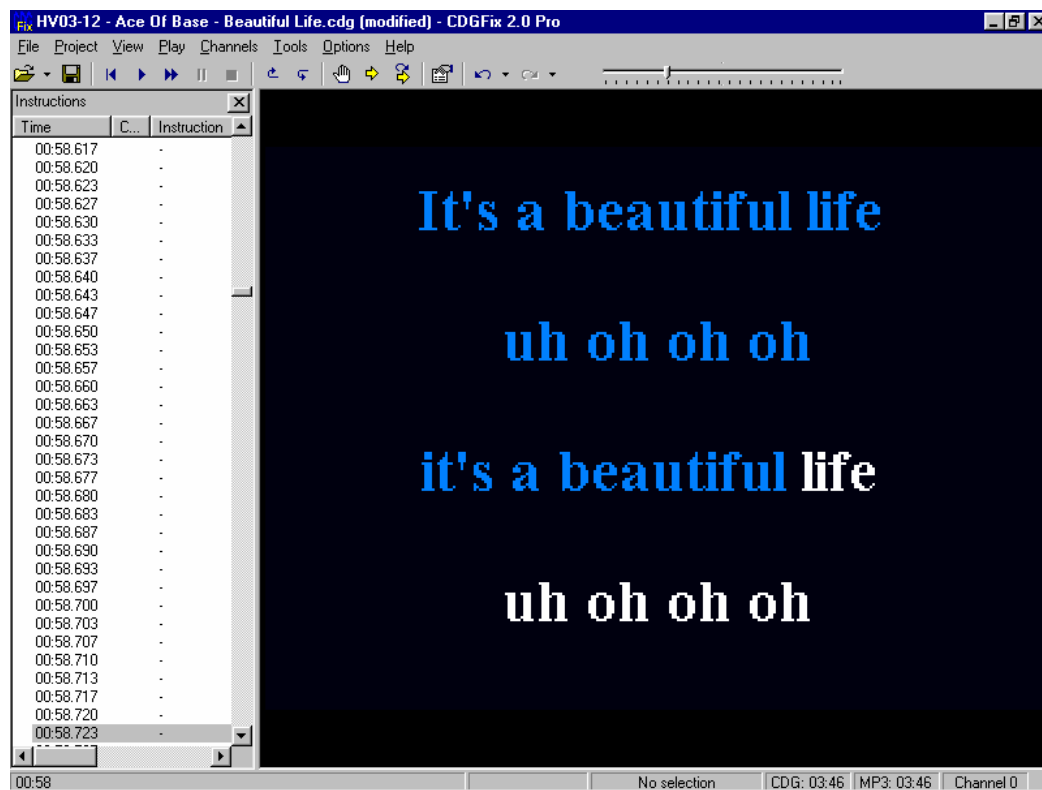
Now press ok and select the block which is errored.



Now at the centre of the 2 small windows, select the arrow down button , and then select the block that you just copied.



There ya go. That saves a bit of time on guess work to make sure a really badly corrupted block can be Fixed quickly.
Press Ok and close Track Tile Window to check results.



Please remember though that it will be a bit difficult to do on Karaoke brands that have many colors in the text, again, the more familier you get, the more easier it will become.