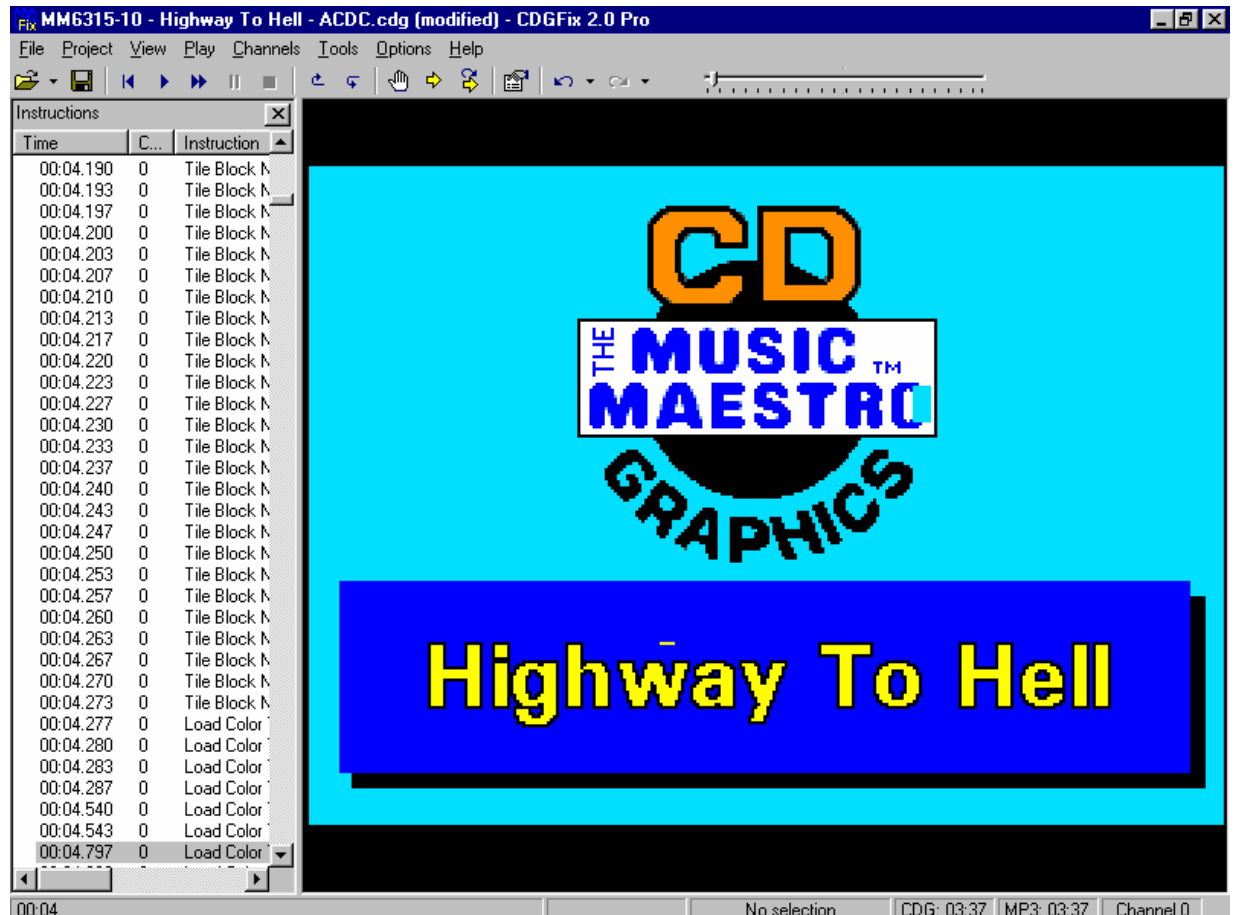


Repairing errors on Fading in and out screens such as Essential Karaoke & Music Maestro discs.

Repairing these errors can be a little difficult but once you have repaired a few it will become easier (Hopefully).

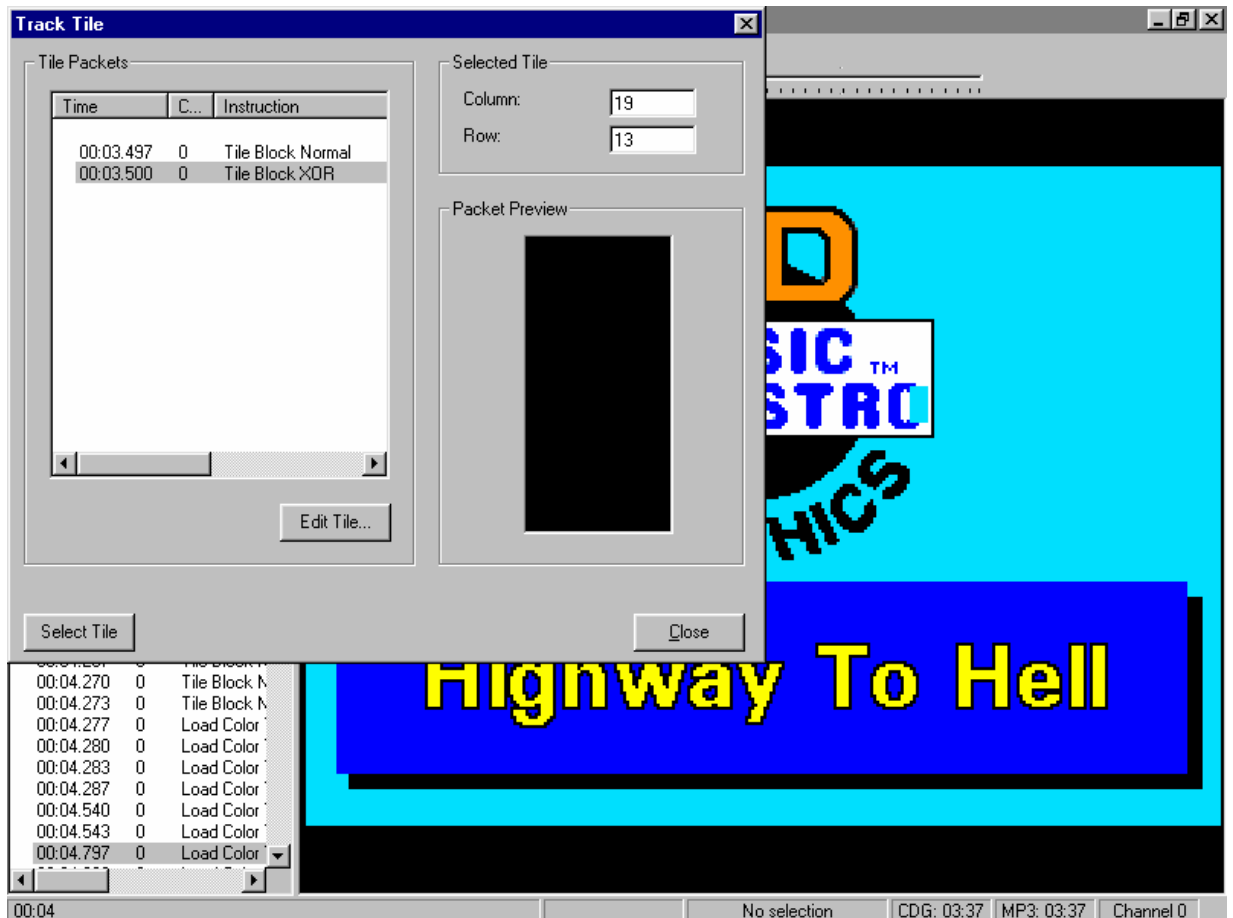
The problem with these errors are that the screen gets written and then fades in, unlike normal cd+g's that display as they are directly written to the screen.

Here is an errored screen once the display has faded in.

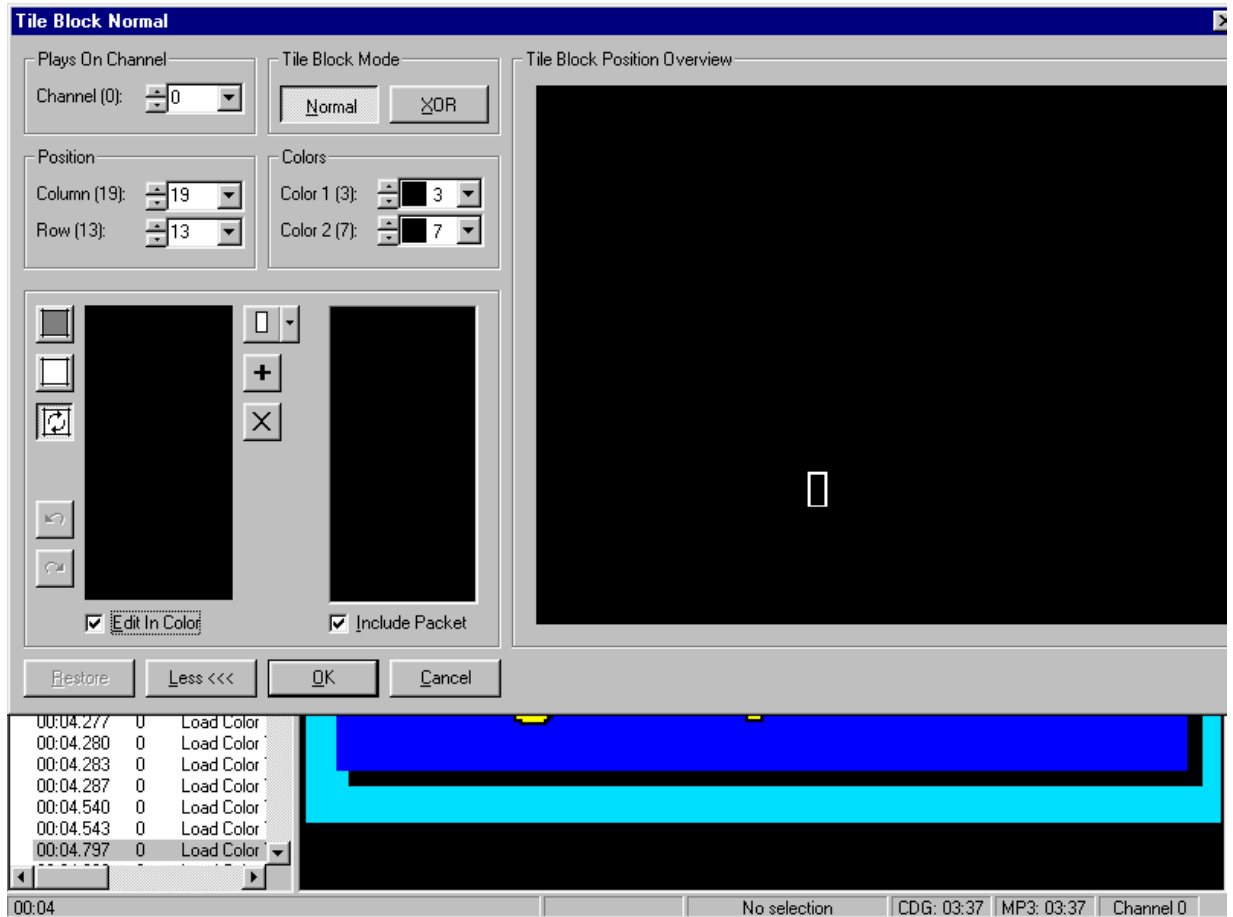


The way to repair these is to get familiar with the error on the screen as you need a little bit of guess-work and luck with a monochrome image of the block

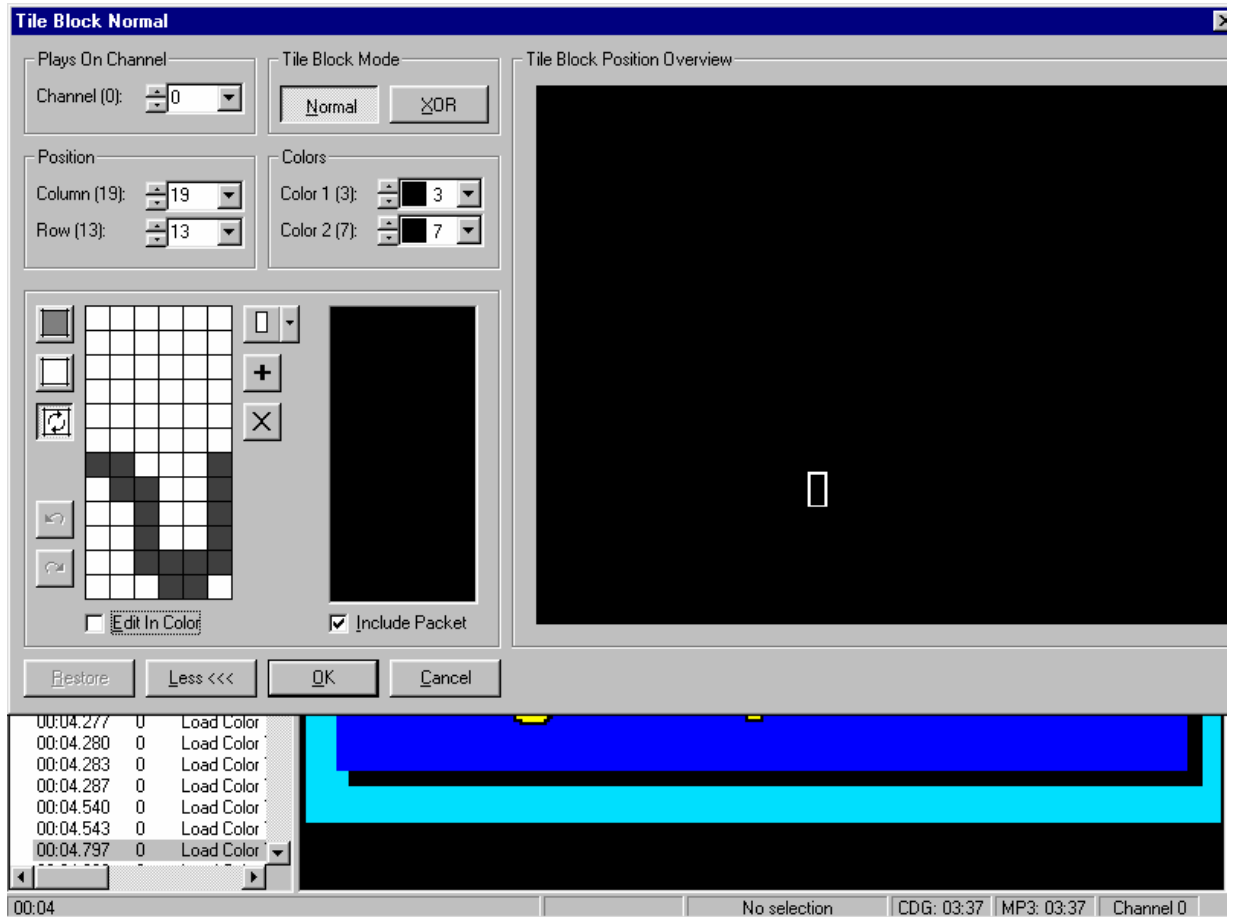
As with all the repairs. Use Ctrl & T then select the faulty block.



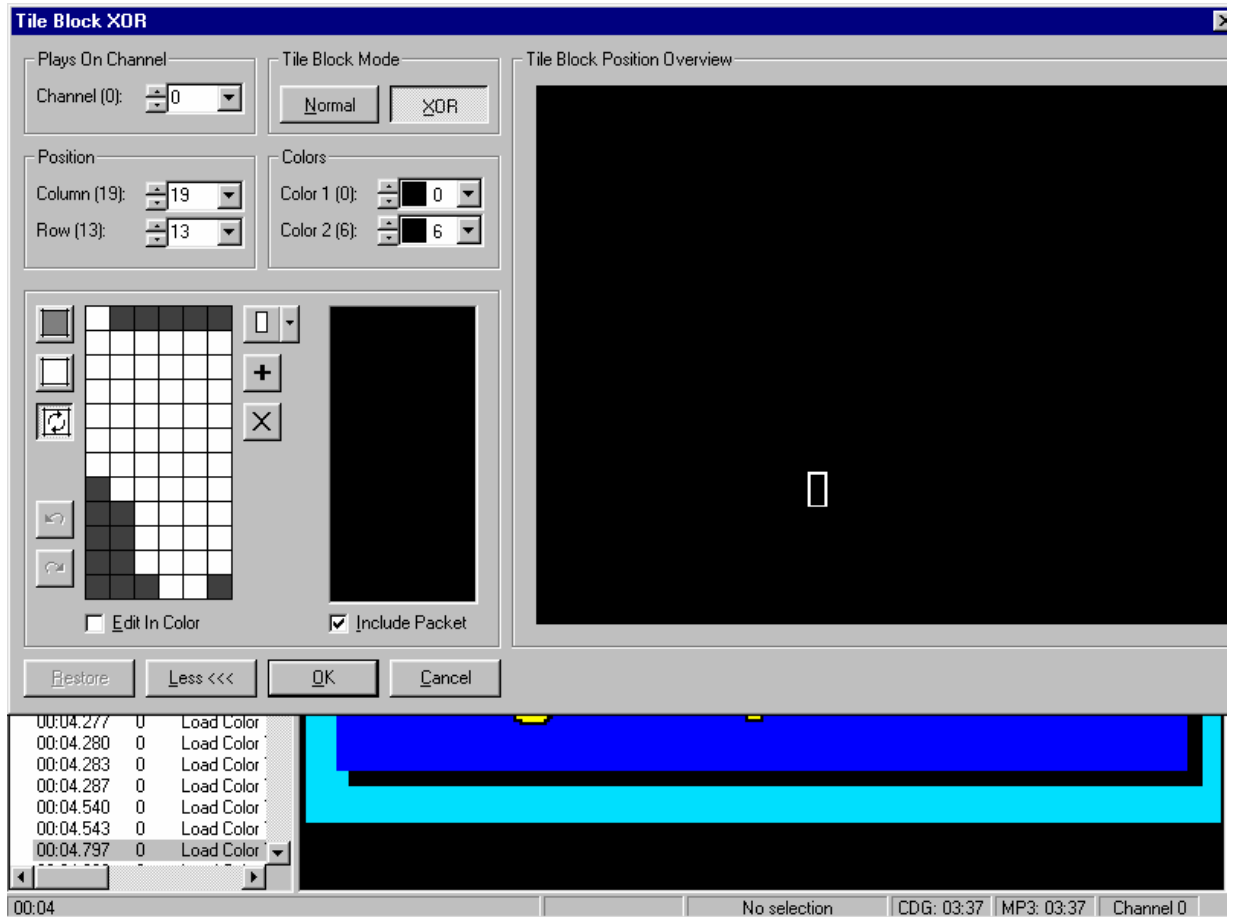
You will notice that the packet preview is blank and your unable to see the block. So now is the guess work part. The error will be in one of the 2 packets displayed. Again get yourself familier with the error. Eg this has a long line at the top of the block. Now edit the first one on the list.



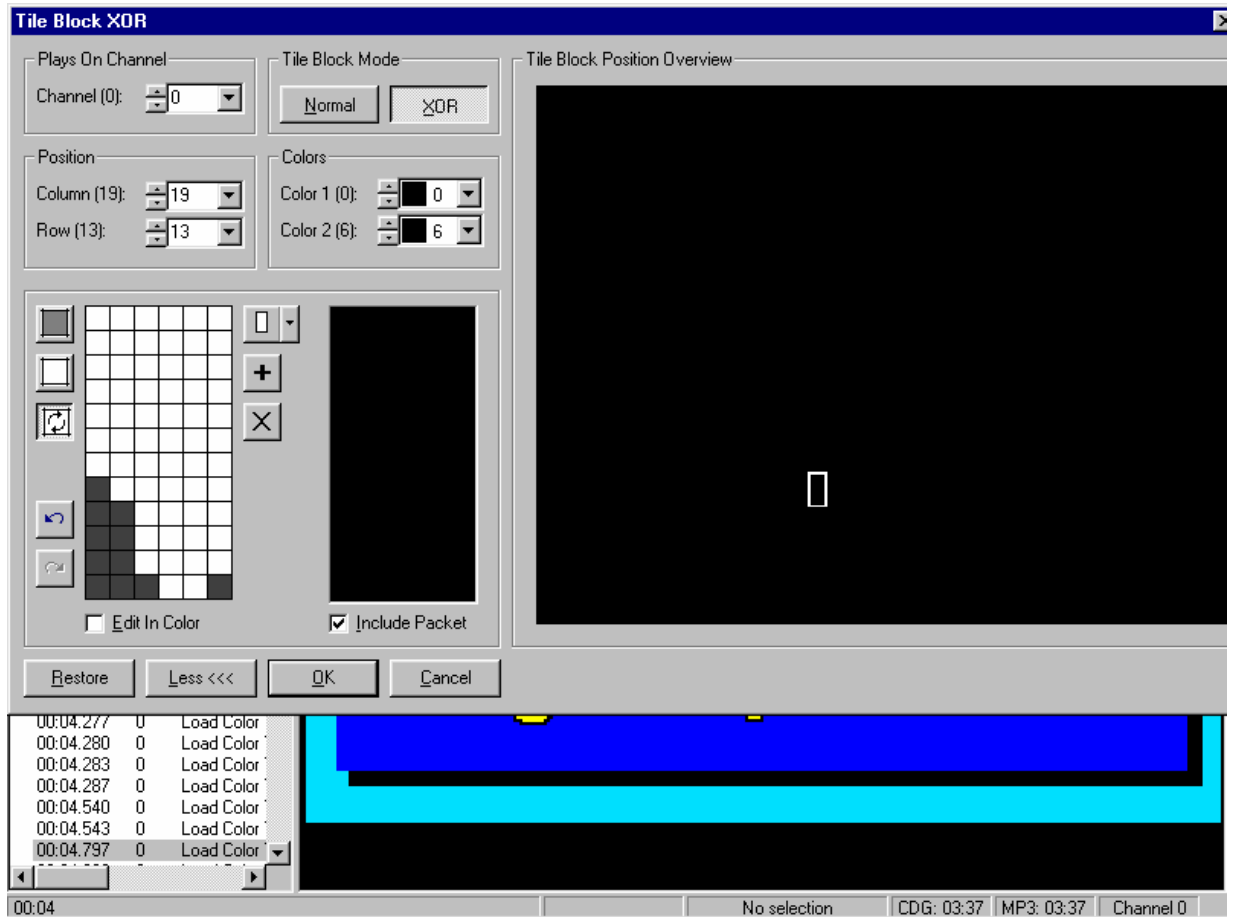
you will notice that everything is black.....all you need to do is uncheck the edit in color box on the left window.



now you can see a monochrome image of the error.
Remembering the error and looking at this block. This one does not contain the error. Advance to the next.



that looks like it. A line at the top of the screen. Delete this so you think it looks correct and re-test.

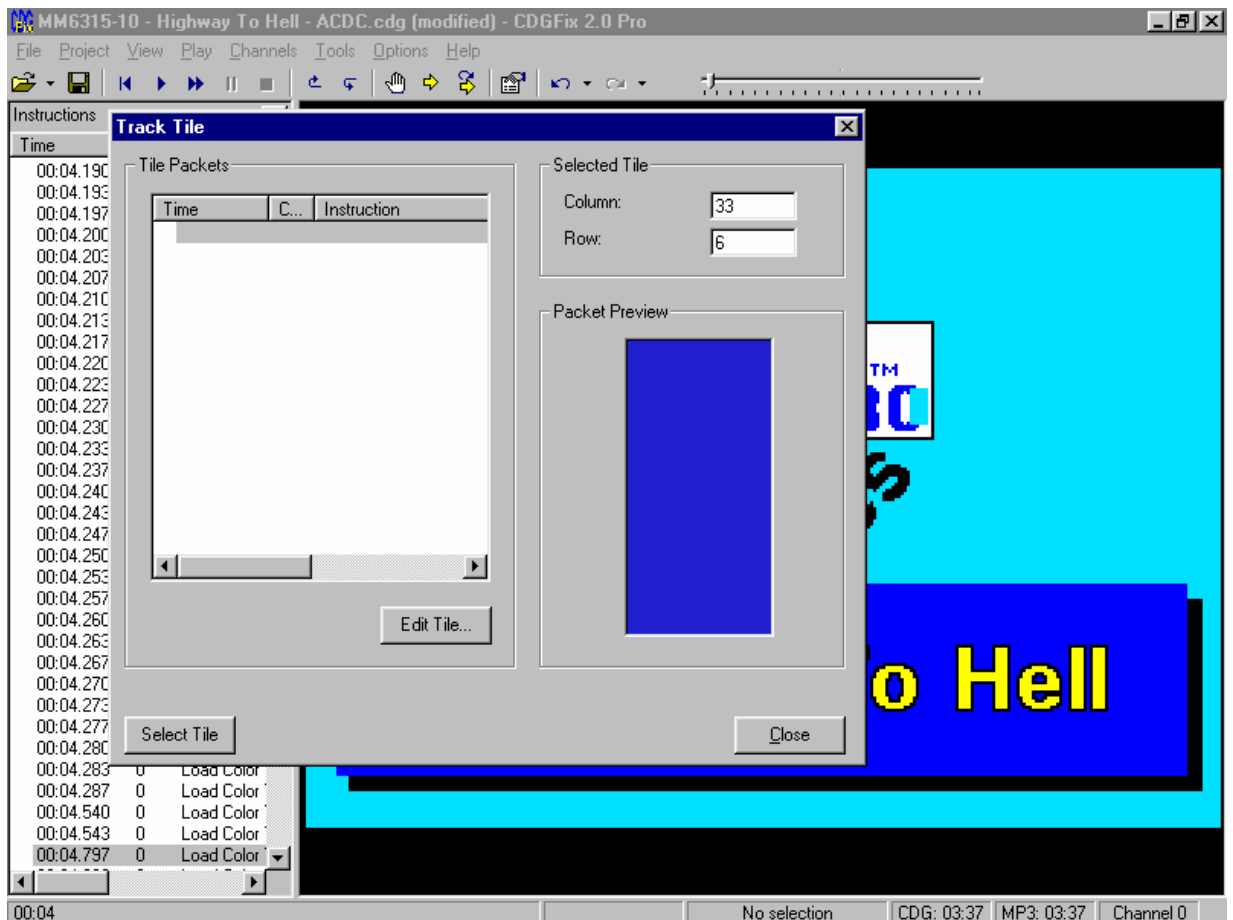


once the tile block window has been closed the error should be gone.



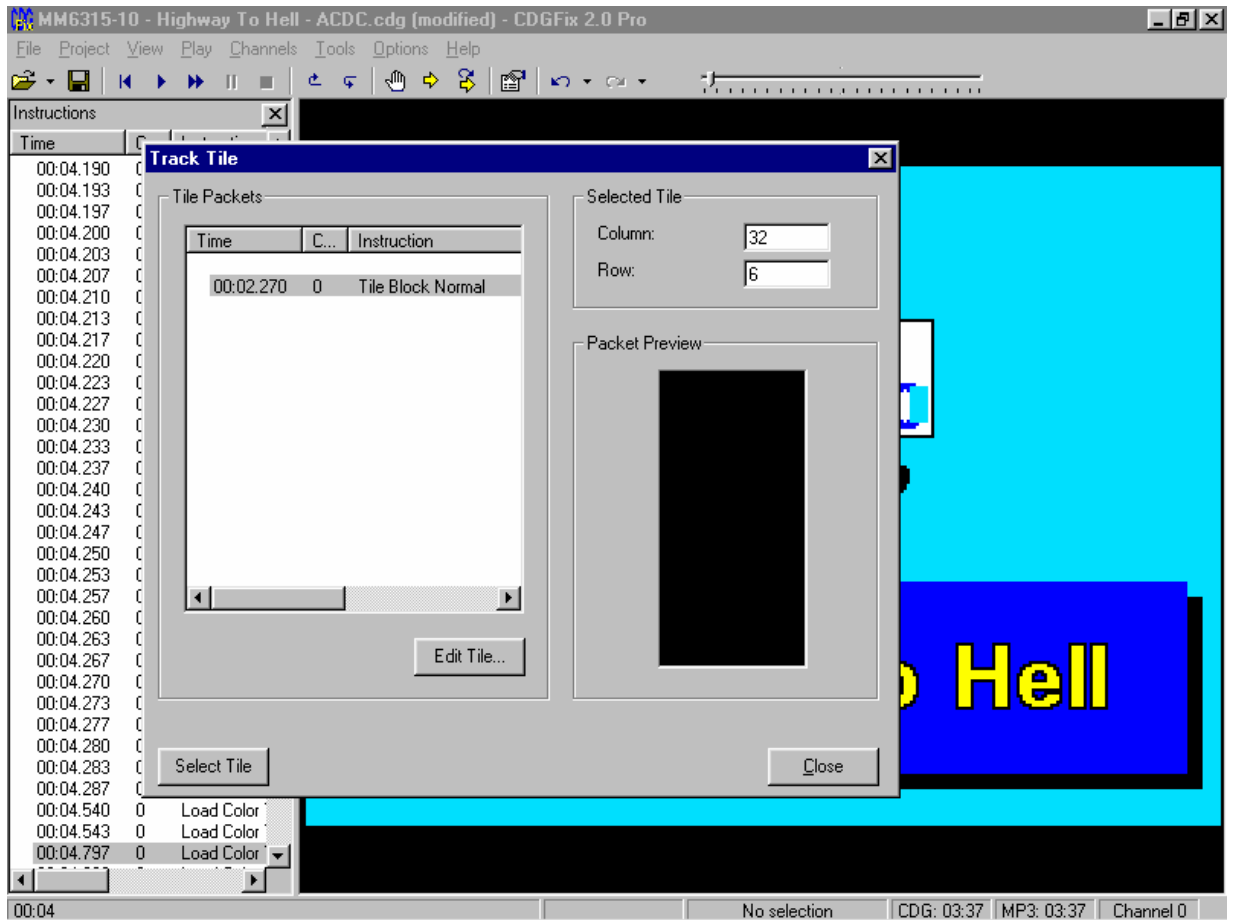
As we said, these errors can be very tricky and misleading, so a lot of practice & patience is needed with these fading screens.

Now the O error. CTRL & T and select the error.



There are no blocks being selected, which means that the block is either misplaced or missing.
Now comes the fun bit.

Select the unerrored block which is to the left of the missing block and make a note of the time coordinates, and the position.

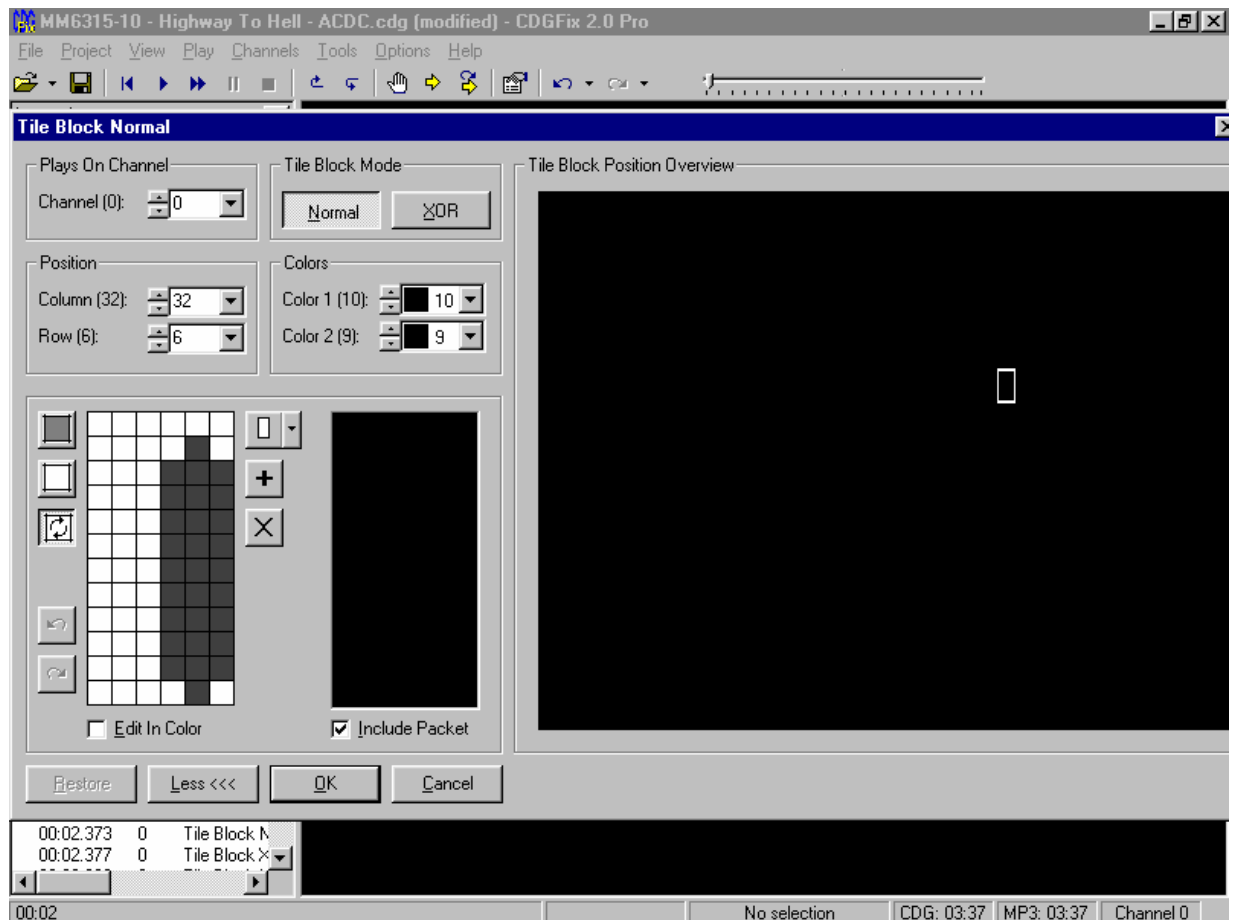


the time span is 00:02:270 and the co-ordinates are column 32 : Row 6.
Now Press Shift Ctrl & F9 which will give you a “Jump To” command.
And select the time as 00:02:270.

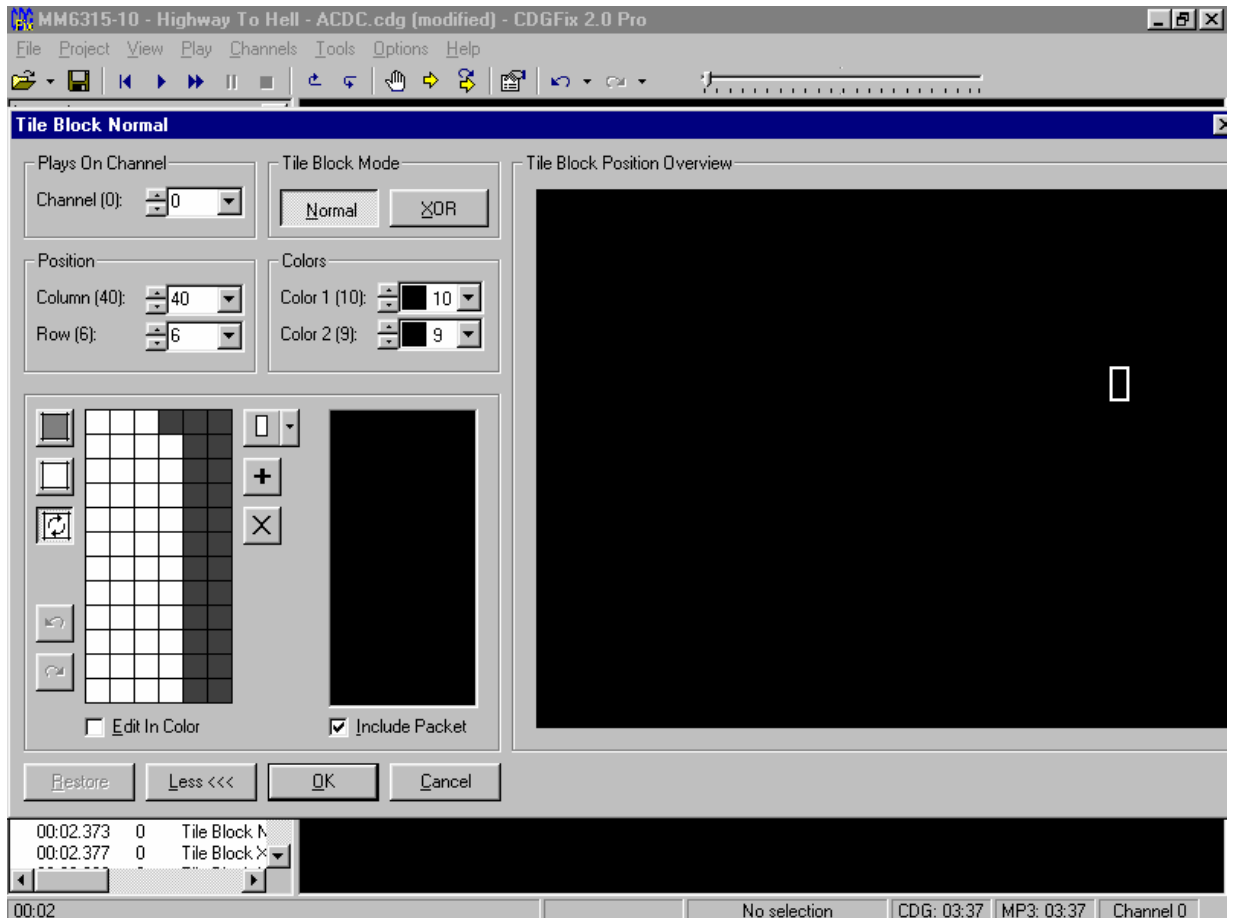


Now some more skill work is needed. As a Rule the file is written in sequence with the columns and rows. For this example C = Column R = Row.... C1R1 C2R1 C3R1 will make the commands go across the screen C1R1 C1R2 C1R3 will make the commands go down the screen

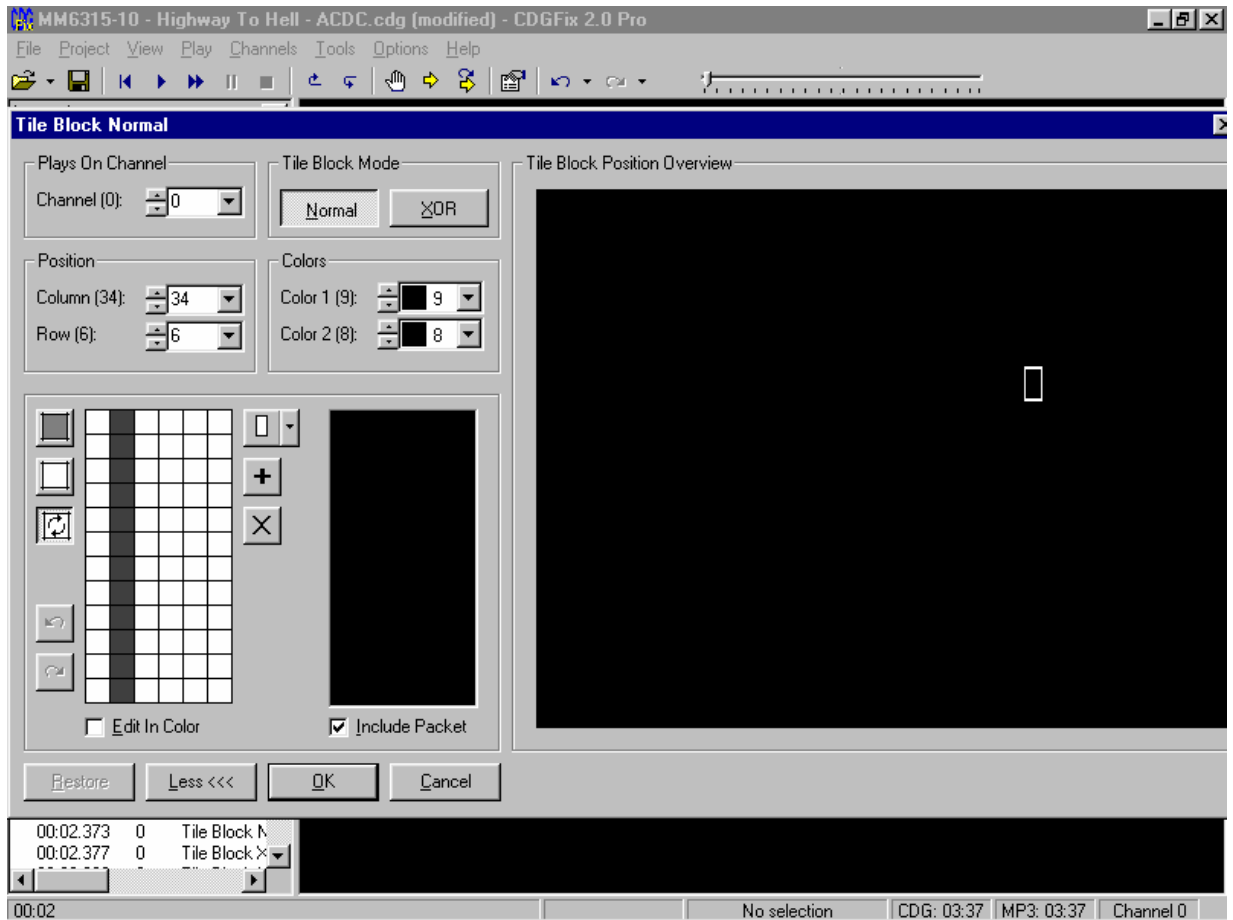
1 word normally uses 2 rows and 2 columns. So as an example if you see C1R1 C7R1 C3R1 then the middle block has an error on the Column position. So if you follow all that. View the column again on the selected block and the following blocks should follow a pattern. 1,2,3,4,



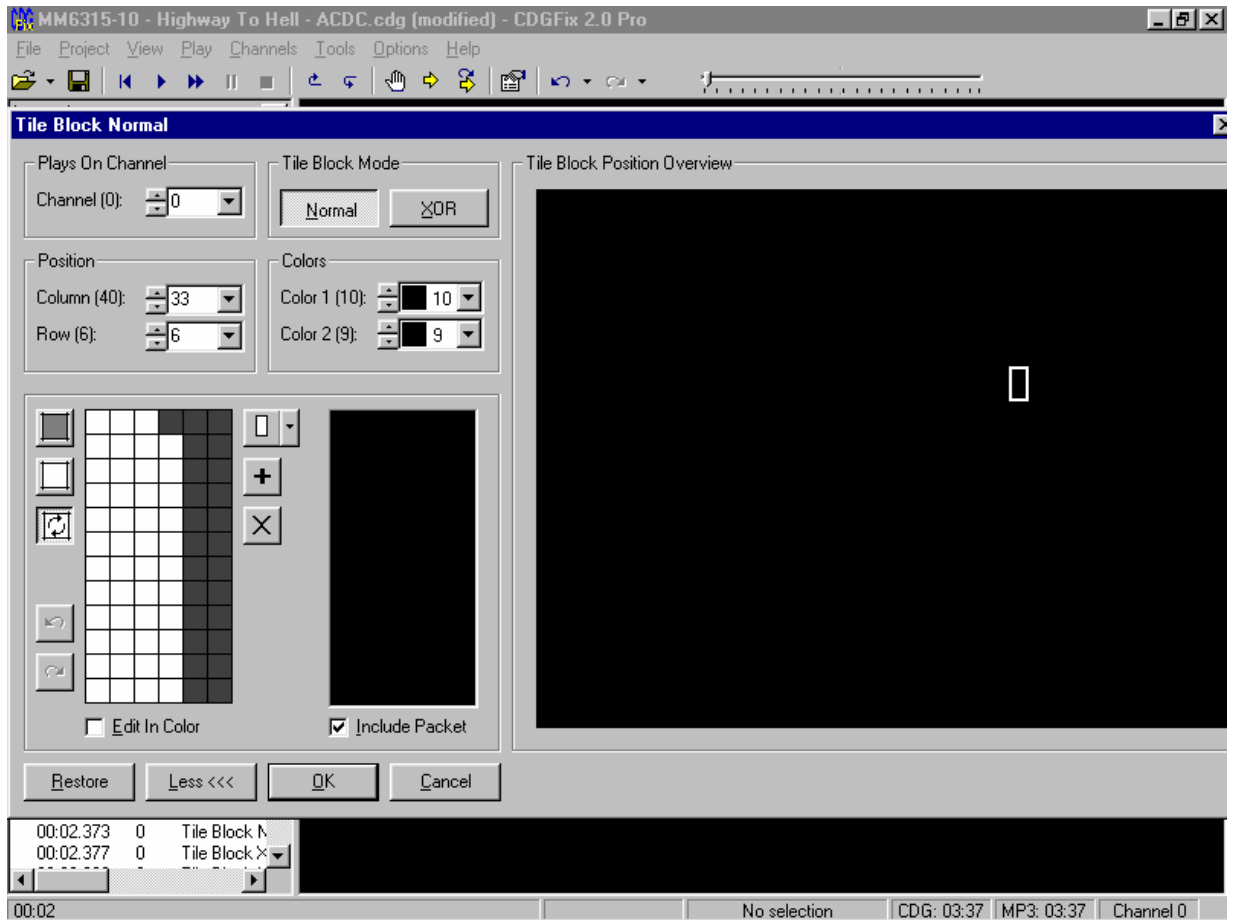
This is the current correct block selected. The co-ordinates are C:32 R:6
 So the errored block should be C:33 R:6. Press F8 to advance each block to look for the error.



Now this block doesn't follow a pattern. It jumps from C:32 R6 to C:40 R6. lets double check. Advance another block with F8.



Now it goes back to C:34 R8. so the block saying C:40 should infact be C:33.
 Go back to this block using Shift & F8 and edit it
 With the mouse move the block from the current position to the correct one.



now the pattern has returned. Eg C:32,33,34 etc and not C:32,40,34 as it was. Pres Ok and Close tile Block window.

Hope this helps with these difficult problems. We are currently trying to work on an easier way to repair these Fading Screens, so please Bare with us.

The CDGFix Crew © 2003