

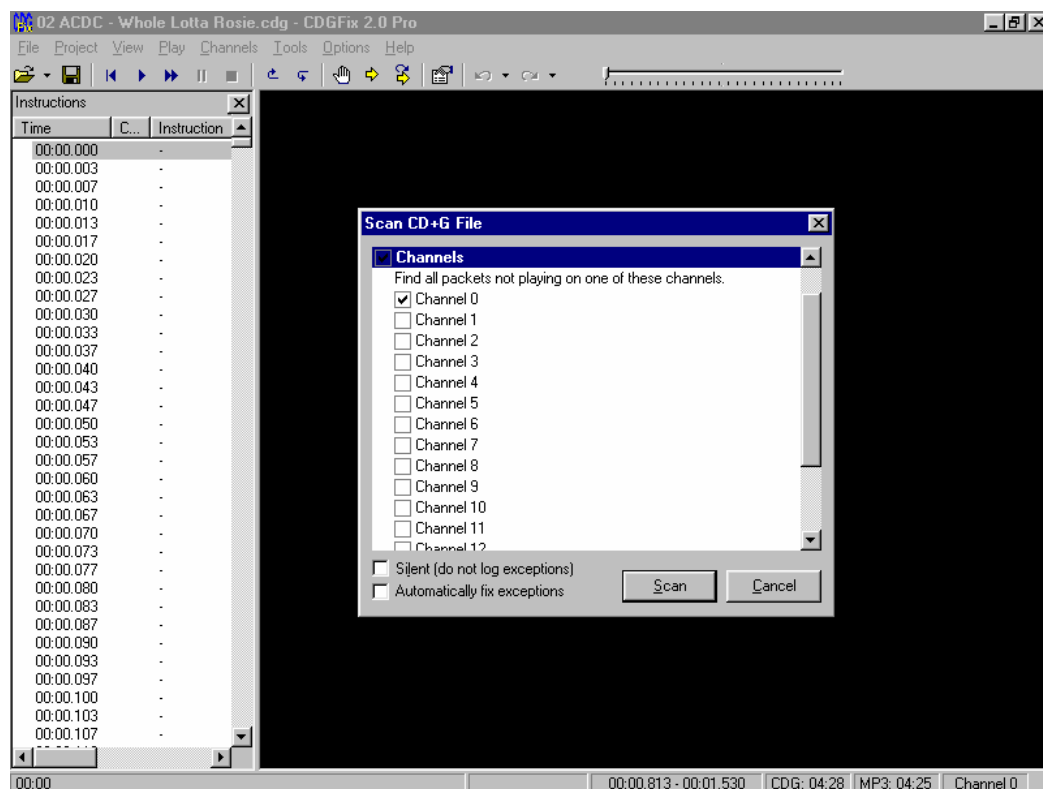
Scan File Function

1. Scan file settings

This is a suggested settings guide to help you to get the best out of the program.

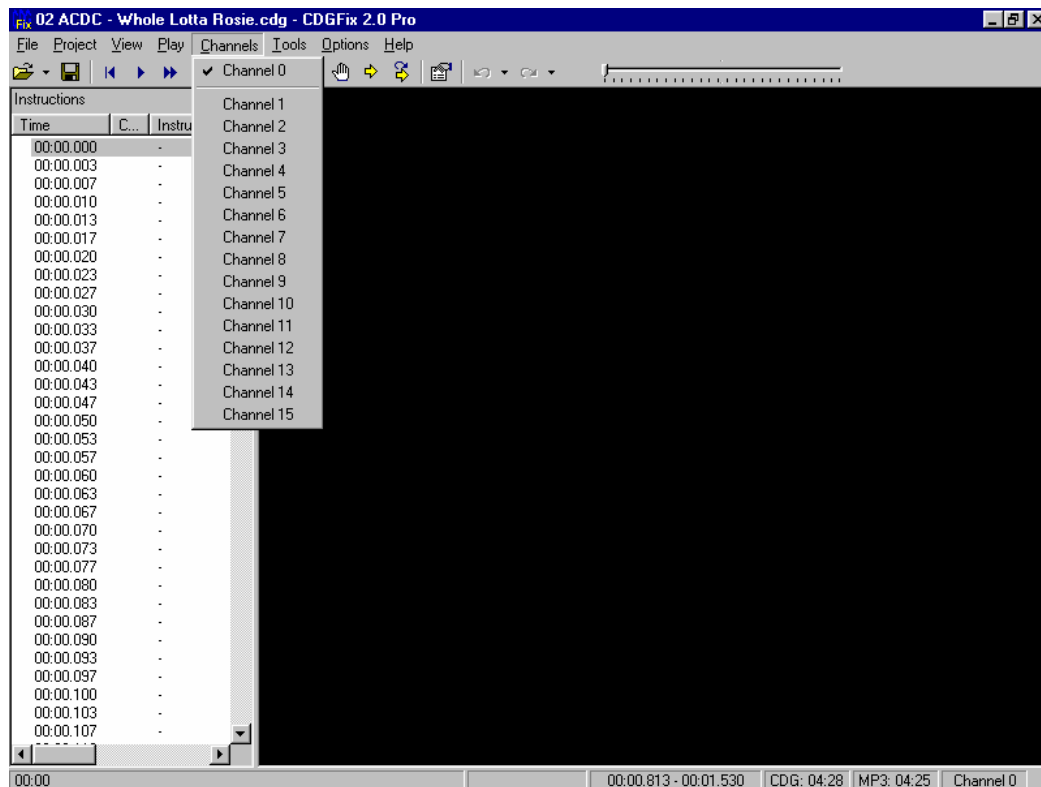
Load a file and select tools/ scan file

Double click on channel and uncheck all except 0



Please note that with some karaoke brands that use 2 channels , eg pioneer. This setting will not work good. For this setting you can automaticly repair any block that does not use channel 0.

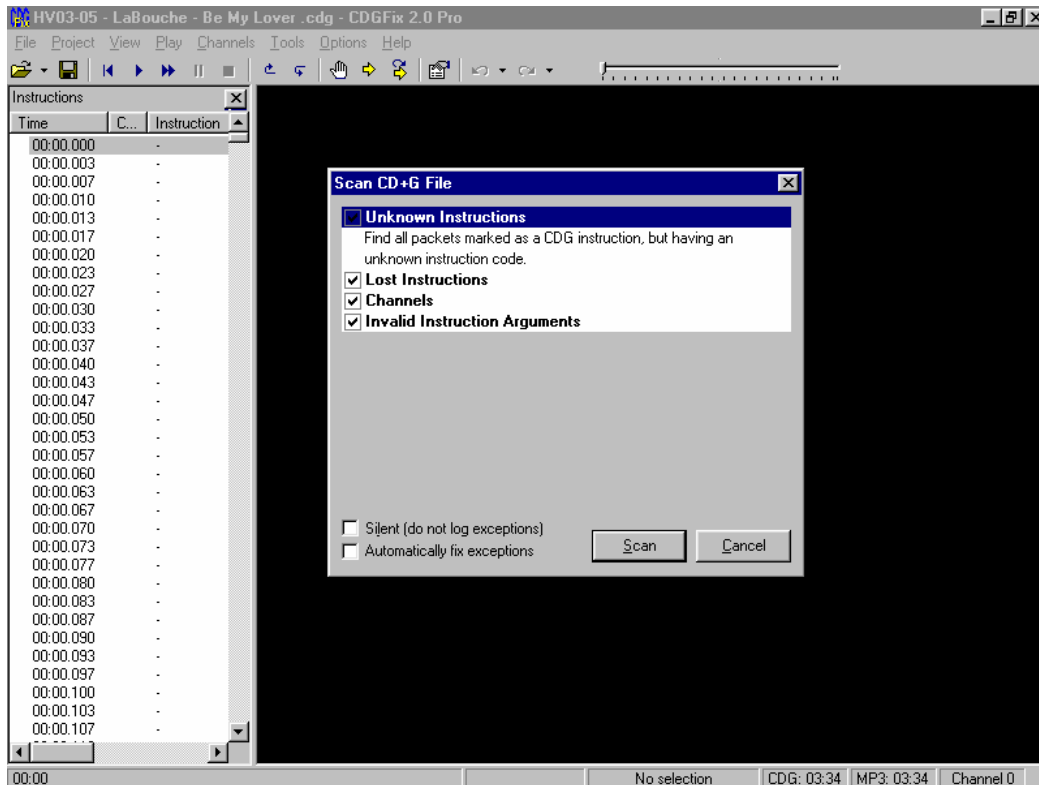
As well goto channels and make sure only channel 0 is selected. Again, this will not work good on Pioneer and new settings will have to be applied



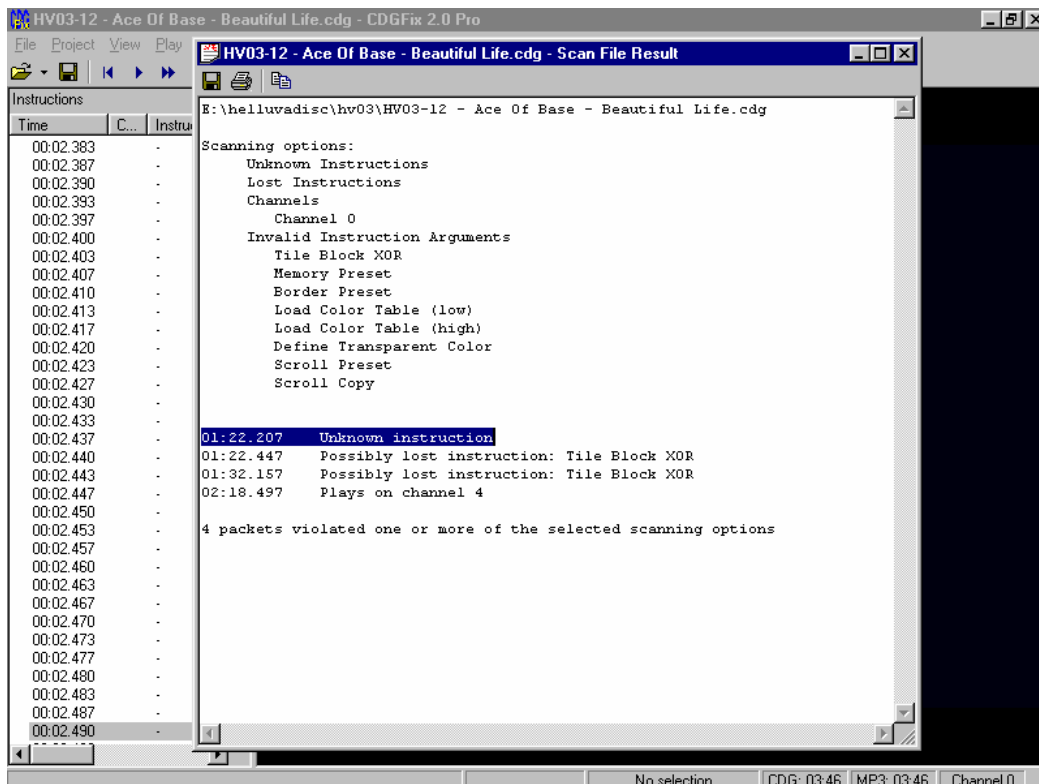
2.Using Scan File

To Check the condition of a cdg disc without playing it, we have implimented Scan File to CDGFix.

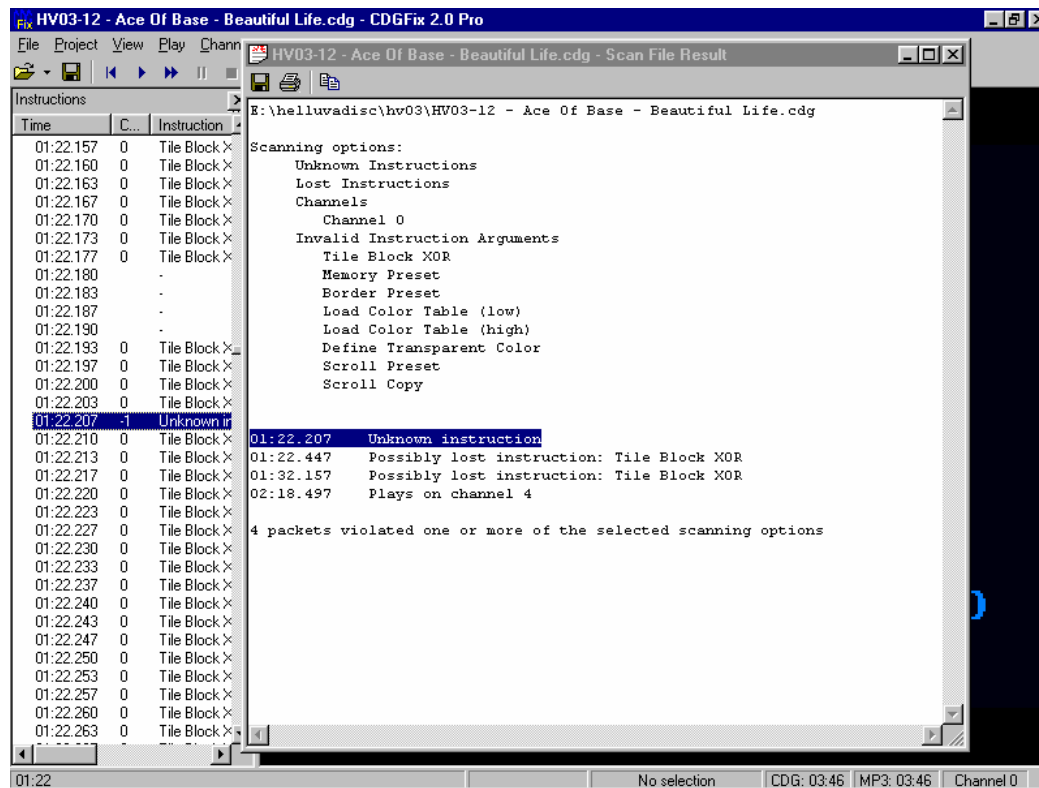
Load a file and then goto tools / scan file.



Scan for errors will give you a written report on how many problematic errors you will have on the file.
Here is a file with errors.



To edit these errors just double click on the txt info and the program will take you straight to the error displayed.



A Suggestion is to use scan file before you start checking for errors as this will fix all the common errors associated with a cdg file, then once you have all errors fixed, then start testing for other errors. Please note that is scan file doesn't show any errors. It "does not" mean that the track has no errors, either play the file to test or use thumbnails to check as well.